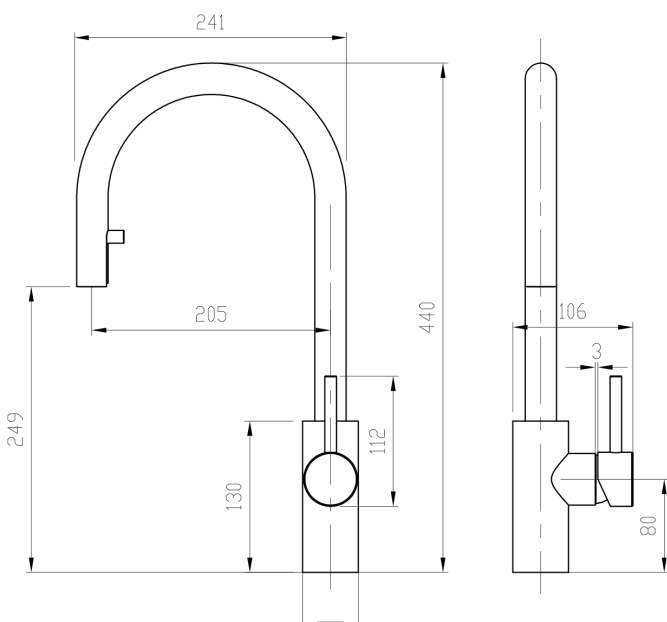


PURITY Minimal Gooseneck Pulldown Sink Mixer - Cold



PRODUCT CODE

FSSS2

FEATURES

Cold Start Technology

COLOUR/FINISHES

Brushed Stainless Steel

PRESSURE TYPE

Mains Pressure only

MIN. PRESSURE

150kPa

MAX. PRESSURE

500kPa

WELS RATING

Mains 4 Star / 6.0L/min

MAX. TEMPERATURE

65°C

PLUMBING CONNECTION

15mm

BENCH HOLE SIZE

35mm

REPLACEMENT PART/S

Sink Mixer Handle Stainless Steel –
FORPT201

Installation instructions are available from the
product page on FORENO.CO.NZ