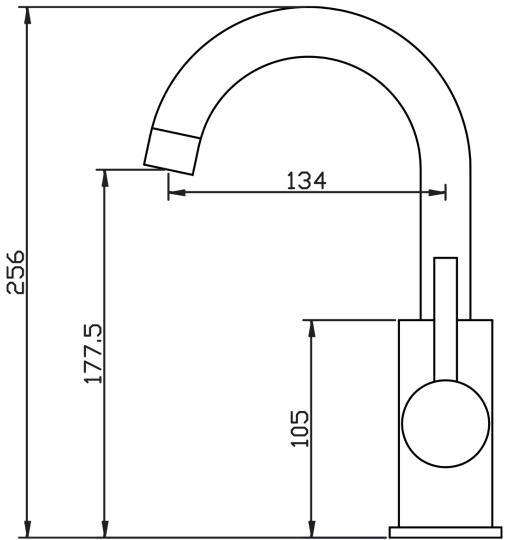


E-STEEL Minimal Gooseneck Basin Mixer



PRODUCT CODE	ESS020
COLOUR/FINISHES	Brushed Stainless Steel
PRESSURE TYPE	All pressures
MIN. PRESSURE	35kPa
MAX. PRESSURE	500kPa (As per NZ Building Code AS/NZ 3500.1)
WELS RATING	Low/Unequal 4 Star; 7L/min Mains 5 Star; 6L/min
MAX. TEMPERATURE	65°C
PLUMBING CONNECTION	15mm
EXCLUSIVE TO	Bunnings Warehouse
CARTRIDGE TYPE	FORPT105 – 35mm Flatbase Cartridge
REPLACEMENT PART/S	Mixer Handle Stainless Steel – FORPT201

Specifications and dimensions are subject to change without notice.

Installation instructions are available from the product page on www.foreno.co.nz

Foreno Tapware products are in full compliance with the requirements as set out in the New Zealand Building Code: www.foreno.co.nz/building-code-clauses/

This product is not subject to a warning or ban under section 26 of the Building Act 2004.