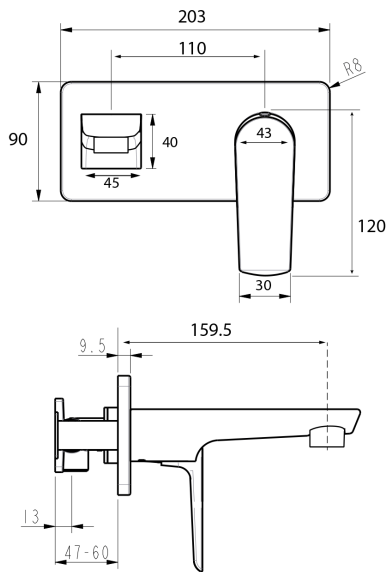


# NORTH Wall Mounted Basin Mixer



## PRODUCT CODE

**NRT21CH**

## COLOUR/FINISHES

Brushed Brass (PVD)  
Brushed Gunmetal (PVD)  
Matte Black  
Chrome

## PRESSURE TYPE

All Pressures

## MIN. PRESSURE

35kPa

## MAX. PRESSURE

500kPa (As per NZ Building Code AS/NZ 3500.1)

## WELS RATING

Low/Unequal 4 Star; 7L/min  
Mains 4 Star; 6.5L/min

## MAX. TEMPERATURE

65°C

## PLUMBING CONNECTION

15mm

## SPOUT REACH

159.5mm

## FACEPLATE (W X H)

203 x 90mm

Specifications and dimensions are subject to change without notice.

Installation instructions are available from the product page on [www.foreno.co.nz](http://www.foreno.co.nz)

Foreno Tapware products are in full compliance with the requirements as set out in the New Zealand Building Code: [www.foreno.co.nz/building-code-clauses/](http://www.foreno.co.nz/building-code-clauses/)

This product is not subject to a warning or ban under section 26 of the Building Act 2004.