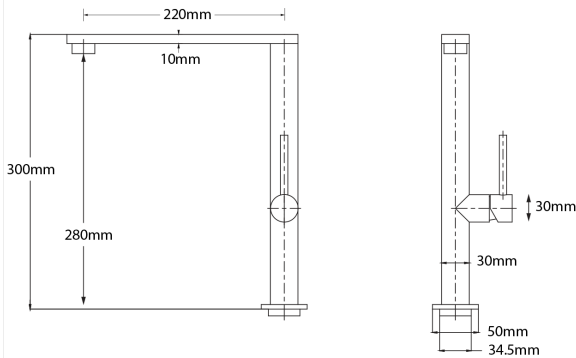


E-STEEL Square Sink Mixer - Cold Start



PRODUCT CODE

ESS11SS

COLOUR/FINISHES

Matte Black
Brushed Stainless Steel

FEATURES

Cold Start Technology

PRESSURE TYPE

Mains Pressure Only

MIN. PRESSURE

150kPa

MAX. PRESSURE

500kPa (As per NZ Building Code AS/NZ 3500.1)

WELS RATING

Mains 4 Star; 7L/min

MAX. TEMPERATURE

65°C

PLUMBING CONNECTION

15mm

BENCH HOLE SIZE

35mm

CARTRIDGE TYPE

European Ceramic Cartridge

SPOUT TYPE

Single Function
Swivel

SPOUT REACH

220mm

EXCLUSIVE TO

Bunnings Warehouse

Specifications and dimensions are subject to change without notice.

Installation instructions are available from the product page on www.foreno.co.nz

Foreno Tapware products are in full compliance with the requirements as set out in the New Zealand Building Code: www.foreno.co.nz/building-code-clauses/

This product is not subject to a warning or ban under section 26 of the Building Act 2004.