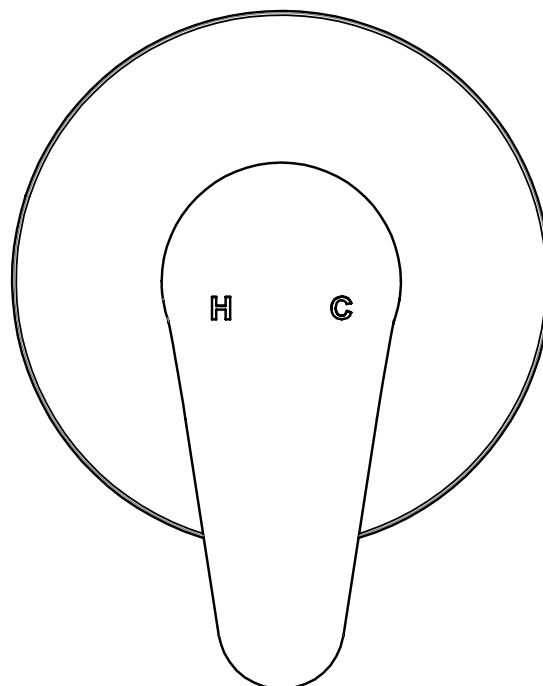




# FORENO.

## ESPREE FLO Shower Mixer EF03



Congratulations on your purchase of this high quality product from Foreno Tapware.  
Please read the following before installation and retain (along with your receipt) for future reference.

### TECHNICAL SPECIFICATIONS

#### Suitable for All Pressures

Minimum Pressure = 35kPa

Maximum operating Pressure = 500kPa

Maximum operating Temperature = 65 deg. Celsius

For domestic use only.

### CONFIGURATION

Mains Pressure systems Prior to installation, remove the valve inserts from both inlets.

Unequal Low systems Install as supplied.

Important note: Only slide showers that are equipped with a large internal bore hose and open flow single function handset will work effectively with this shower mixer. We recommend this mixer be used with an Espree Slide Shower (EF04 or FSL5) for optimum performance. If the cold pressure exceeds 500kPa, or the pressure difference is greater than 10/1 ratio (i.e. 400kPa cold and 35kPa hot), we recommend installing a needle valve (not supplied) preferably directly to the cold water feed port on the shower mixer or alternatively anywhere on the cold feedline pipe.

Equal Low systems Prior to installation, remove the valve inserts from both inlets.

### INSTALLATION

Installation must comply with Section 5.4 of AS/NZS 3500 Standard with regard to Isolating stop cock use. Shower mixers must be water tested with the outlet open, to prevent damage to cartridge seals; due to back pressure.

**All pipe work must be flushed prior to the installation of this mixer, accessible inline filters must be installed in the pipework for both the hot and cold inlet supply to prevent particles from damaging the ceramic cartridge.**

Back Flow Prevention: Where back flow prevention is required, install our Back Flow Prevention Valve at the supply elbow hose connection of the handset.

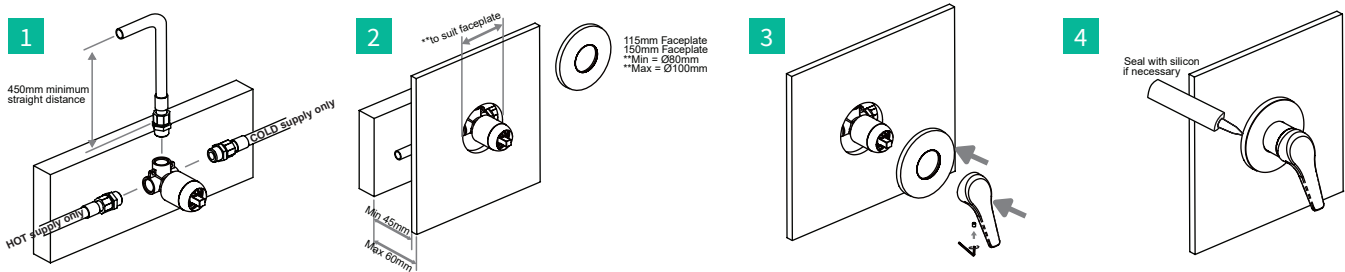
Any water seepage ex- the cartridge cavity opening can be stopped by retightening the large brass retaining nut.

ATTACH PROOF OF PURCHASE HERE

## FOR PRESSURES EXCEEDING 500KPA, INSTALL A PRESSURE REDUCING VALVE. FAILURE TO DO SO WILL VOID THE WARRANTY.

If you have performance issues please check there are no flow restrictors between the hose and the handpiece or the hose and the shower elbow. Remove any restrictors with rubber washers.

**Plumbers Note: Do not pressure test this mixer under static pressure.**



### TROUBLESHOOTING

1. Is the lever between 7 and 8 O'clock? When installed correctly the lever should be close to 7 O'clock position, at 38°C, delivering about 6L per minute, where the relative hot/cold pressures are not greater than 10:1. We recommend installing a Needle Valve (not supplied) if the cold pressure is greater than 500kPa or there is a greater than 10/1 ratio of cold to hot kPa (The needle valve should be about an 1/8th turn open).
2. If the lever is beyond 8 O'clock position, it is likely:
  - One of the valve inserts has been removed from the hot/cold ports;
  - The supply elbow has a restrictive bore (i.e. less than 10mm);
  - The supply hose has a bore size less than 9.5mm;
  - The handpiece is not a free-flow single function model
  - The WELs restrictor hasn't been removed.
  - The Pressure reducing valve has not been readjusted (the feed valve on the LP Hot water cylinder should always be readjusted when installing a new mixer, because the head pressure drops over time. To readjust the Feed Valve (Pressure reducing valve) – turn the adjuster screw clockwise until the first drips appear from the relief pipe (protruding from the roof) or relief valve then back it off half-a-turn and re-secure the locking nut.
3. If the hot/cold mix is temperamental where the lever position is within 7-8 O'clock position, either the hot or cold pressures will just require a slight tweak.
4. Check that the hot and cold supply lines have not been incorrectly plumbed in, i.e. such as the cold supply connected to the hot inlet and hot supply connected to the cold inlet. This is especially bad for Unequal Low systems as the hot port on the shower mixer body can enlarge meaning that the valve inserts will also need to be swapped.
5. When using with Unequal Low systems, it needs to be remembered the requirement for a minimum of 450mm of straight outlet pipe, before any bends.

### WARRANTY

Please refer to our website for warranty information: [www.foreno.co.nz/warranty](http://www.foreno.co.nz/warranty)

In the unlikely event that this product fails during its warranty period, phone our Customer Service team immediately on 0508 FORENO (0508 367 366) – as unauthorised removal of the product may void the warranty.

### CARE AND MAINTENANCE

**NOT TO BE CLEANED WITH ASTRINGENT, ABRASIVE OR CITRIC CLEANERS.**

We recommend using only a soft, damp cloth and on occasion a mild soap solution. Try to avoid excessive scrubbing as this could cause damage and void your warranty.

PROUD PARTNER AND SUPPORTER OF MASTER PLUMBERS, GASFITTERS AND DRAINLAYERS

