



FORENO.

TRIJET 3 Function Slide Shower Chrome FSL3



9 421027 590960

Congratulations on your purchase of this high quality product from Foreno Tapware.
Please read the following before installation and retain (along with your receipt) for future reference.

TECHNICAL SPECIFICATIONS

Suitable for Mains Pressure Only

Minimum Pressure = 150kPa

Maximum operating Pressure = 500kPa*

Maximum operating Temperature = 65 deg. Celsius

For domestic use only.

CONFIGURATION

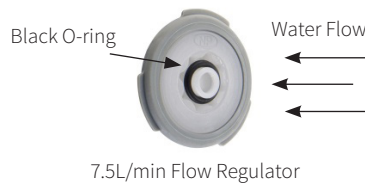
Mains Pressure Systems Install as supplied.

Unequal Low Systems Not Suitable.

Equal Low systems Not Suitable.

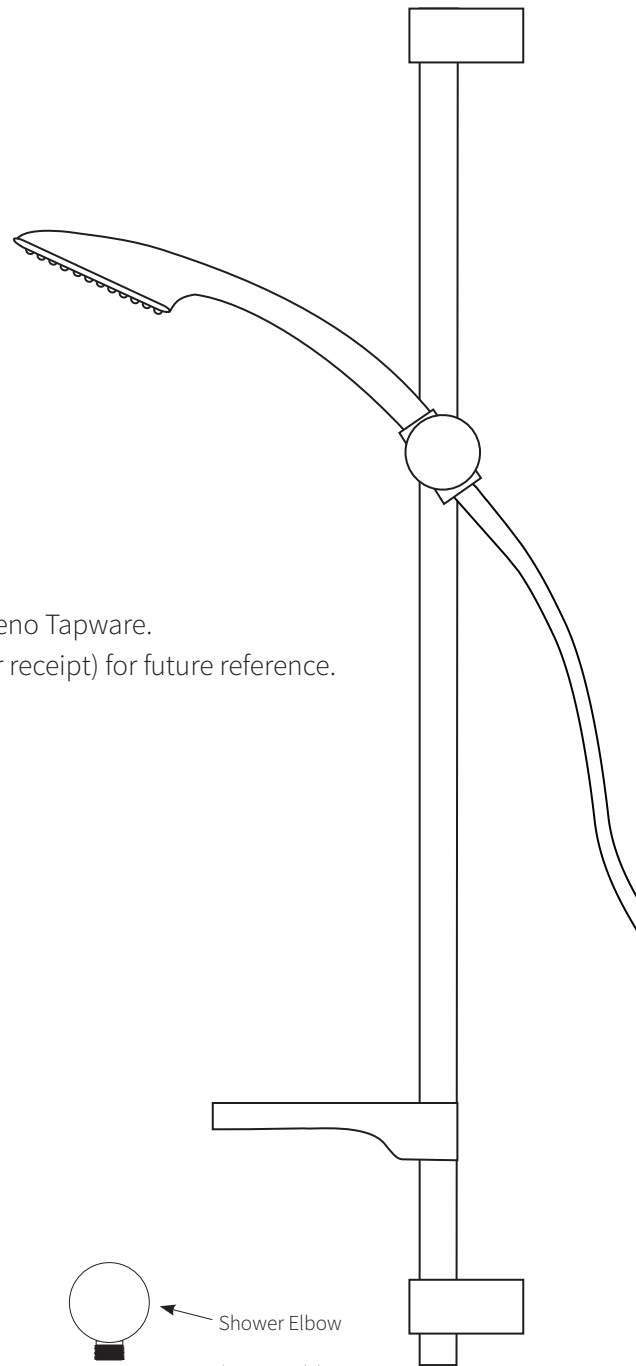
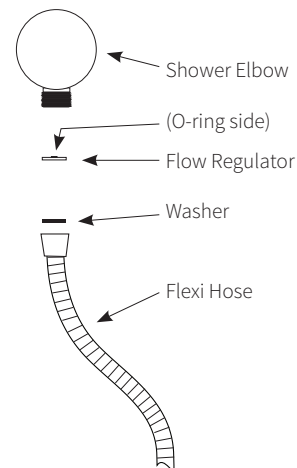
CONTENTS

- Wall brackets and covers
- Fixing kit (wall anchors & screws)
- Glide bar with adjuster/holder
- 1.5m supply hose
- Supply elbow
- Shower handpiece
- Soap dish
- Flow regulator



Mains Pressure installation:

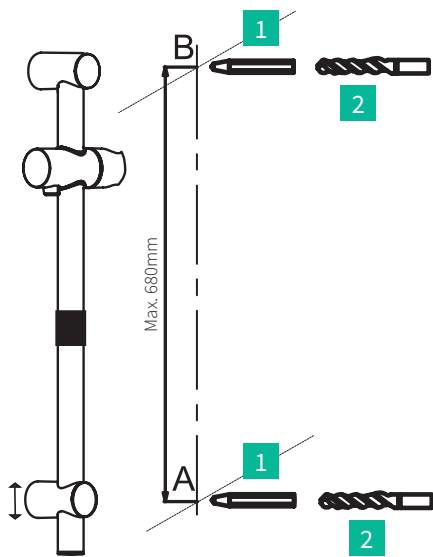
Insert the flow regulator with the O ring facing away from the hose (as shown). This will comply with the WELS rating.



INSTALLATION

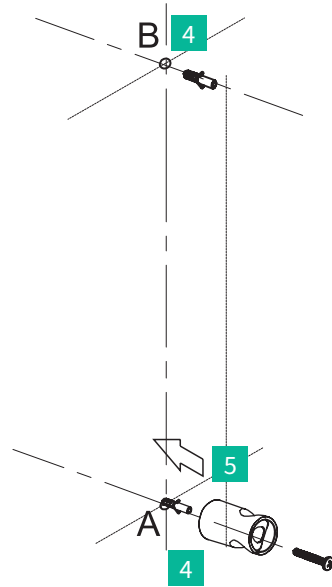
***FOR PRESSURES EXCEEDING 500kPa INSTALL A PRESSURE REDUCING VALVE. THOROUGHLY FLUSH ALL PIPES TO ELIMINATE ANY REMAINING DIRT AND RESIDUE, AND INSTALL INLINE FILTERS. FAILURE TO DO SO MAY VOID THE WARRANTY.**

CAUTION: If using your own screws to install the wall brackets, DO NOT use counter sunk type screws as this will void the warranty.



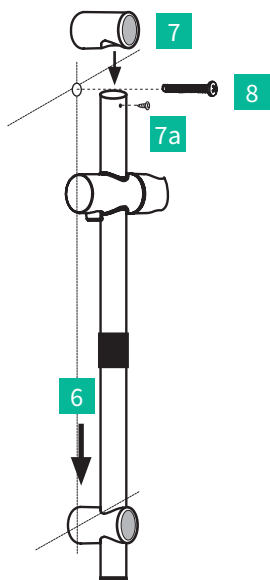
The bottom bracket can be adjusted to desired height

1. Measure and mark anchor positions with pencil.
2. Drill mounting holes suitable for wall anchors.
3. Remove end covers from brackets. Slide bottom bracket off rail, then unscrew retaining screw from top bracket and remove.

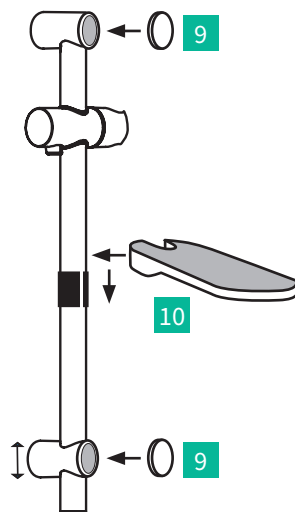


4. Push wall anchors into holes.
5. Fix bottom bracket in place with screw into wall anchor A.

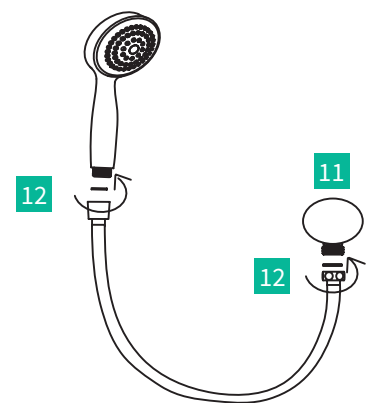
ATTACH PROOF OF PURCHASE HERE



6. Slide the rail tube through the bottom bracket.
7. Slide top bracket onto tube and attach with retaining screw (7a).
8. Fix top bracket in place with screw into wall anchor B.



9. Push end covers onto brackets.
10. Attach soap dish to black plastic fitting on slide rail tube, ensure small tab on soap dish aligns with opening on the fitting.



11. Attach the supply elbow to the supply connection on the wall.
12. Attach hose to elbow and handpiece, then insert handpiece into holder.

WARRANTY

PLEASE CALL US BEFORE REMOVING TAPWARE OR UNDERTAKING ANY REPAIR WORK.

Please refer to our website for warranty information: www.foreno.co.nz/warranty

In the unlikely event that this product fails during its warranty period, phone our Customer Service team immediately on 0508 FORENO (0508 367 366) – as unauthorised removal of the product may void the warranty.

CARE AND MAINTENANCE

SHOULD NOT BE CLEANED WITH ASTRINGENT, ABRASIVE OR CITRIC CLEANERS.

A soft, damp cloth is recommended for cleaning (Not a Micro fibre cloth). Mild soap solutions can also be used on occasion.