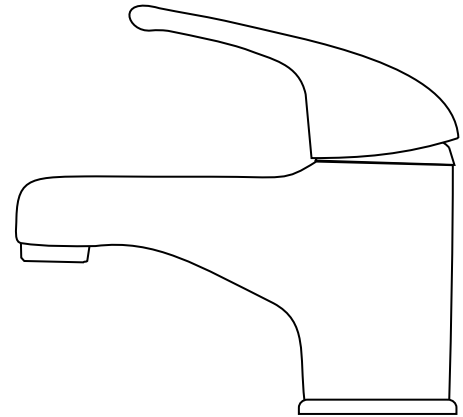




# FORENO.

## LE TAP Basin Mixer LT240



Congratulations on your purchase of this high quality product from Foreno Tapware.  
Please read the following before installation and retain (along with your receipt) for future reference.

### TECHNICAL SPECIFICATIONS

#### Suitable for All Pressures

Minimum Pressure = 35kPa

Maximum operating Pressure = 500kPa\*

Maximum operating Temperature = 65 deg. Celsius

For domestic use only.

### CONFIGURATION

Mains Pressure systems Prior to installation, remove the valve insert from the valve nipple and change aerator to the WELs rated one supplied.

Unequal Low systems Prior to installation, ensure the valve nipple is attached to the cold in-feed hose (flow arrow aligned to the water flow).

Equal Low systems Prior to installation, remove the valve insert from the valve nipples (min. of 40 kPa required).

### INSTALLATION

**\*FOR PRESSURES EXCEEDING 500KPA INSTALL A PRESSURE REDUCING VALVE. THOROUGHLY FLUSH ALL PIPES TO ELIMINATE ANY REMAINING DIRT AND RESIDUE, AND INSTALL INLINE FILTERS. FAILURE TO DO SO MAY VOID THE WARRANTY.**

Position tap in 35mm hole, making sure the seal between tap and supporting surface is in place.

Anchor to bench with fittings pack. (NB: Foreno tube socket tools are available as FORPT58).

Thoroughly flush all pipes to eliminate any remaining dirt and residue and install inline filters.

Connect supply hoses to plumbing connections. NB: Maximum bend for flexible hose is 35mm radius. Do not stretch, crush or twist hoses. Do not swage hose ends.

Turn on mains supply. Check for leaks.

**Plumbers Note: Do not pressure test this mixer under static pressure.**

ATTACH PROOF OF PURCHASE HERE

#### WARRANTY

**PLEASE CALL US BEFORE REMOVING TAPWARE OR UNDERTAKING ANY REPAIR WORK.**

Please refer to our website for warranty information: [www.foreno.co.nz/warranty](http://www.foreno.co.nz/warranty)

In the unlikely event that this product fails during its warranty period, phone our Customer Service team immediately on 0508 FORENO (0508 367 366) – as unauthorised removal of the product may void the warranty.

#### CARE AND MAINTENANCE

**SHOULD NOT BE CLEANED WITH ASTRINGENT, ABRASIVE OR CITRIC CLEANERS.**

A soft, damp cloth is recommended for cleaning. Mild soap solutions can also be used on occasion.

PROUD PARTNER AND SUPPORTER OF MASTER PLUMBERS, GASFITTERS AND DRAINLAYERS





# FORENO.

## LE TAP Slide Shower Chrome LTSV



9 421027 591400

Congratulations on your purchase of this high quality product from Foreno Tapware.  
Please read the following before installation and retain (along with your receipt) for future reference.

### TECHNICAL SPECIFICATIONS

#### Suitable for All Pressures

Minimum Pressure = 35kPa

Maximum operating Pressure = 500kPa\*

Maximum operating Temperature = 65 deg. Celsius

For domestic use only.

### CONFIGURATION

Mains Pressure systems Install the flow regulator as shown in the diagram below.

Unequal Low Systems Install as supplied.

Equal Low systems Install as supplied.

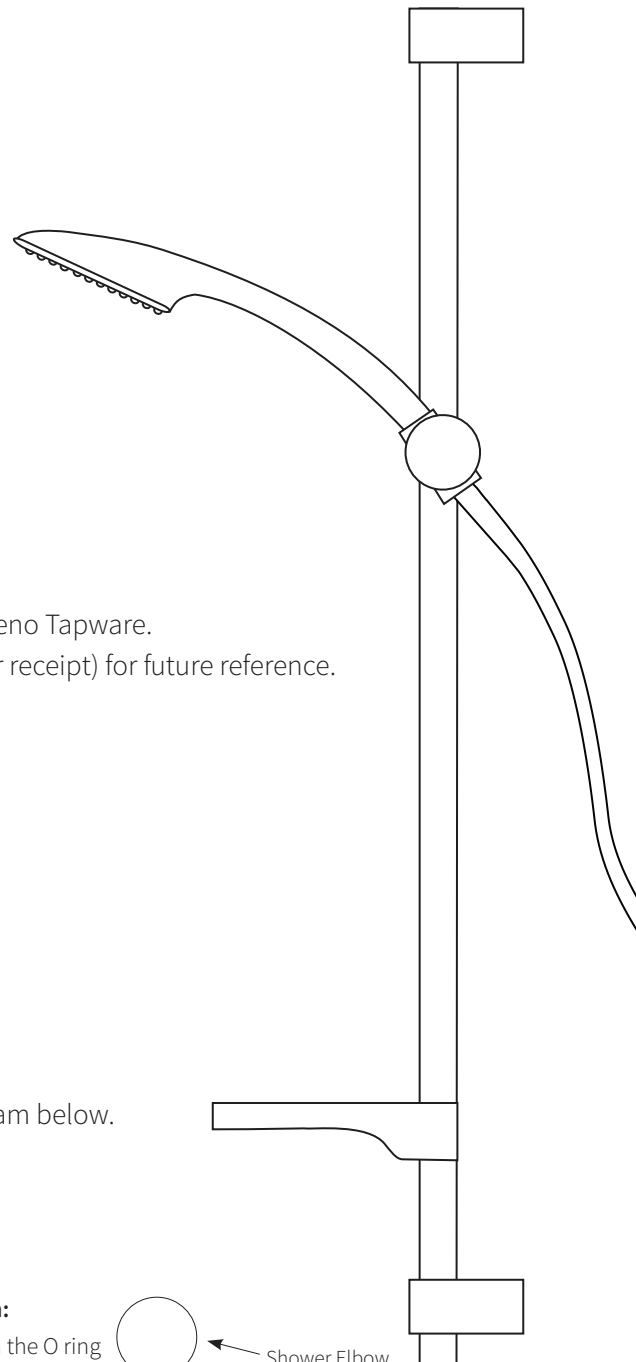
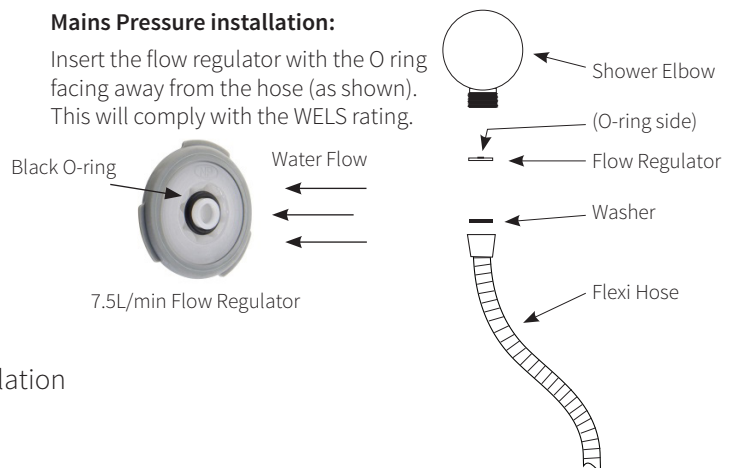
### CONTENTS

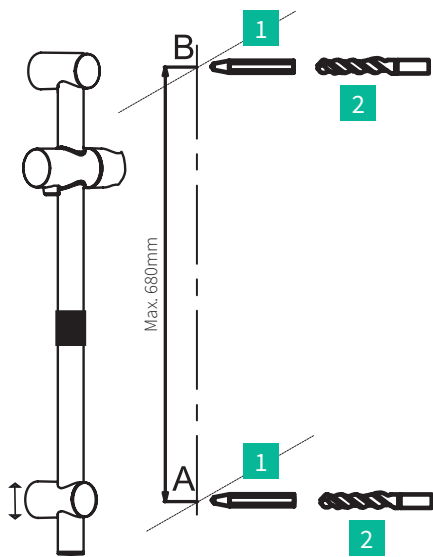
- Wall brackets and covers
- Fixing kit (wall anchors & screws)
- Glide bar with adjuster/holder
- 1.5m supply hose
- Supply elbow
- Shower handpiece
- Soap dish
- Flow regulator for Mains Pressure installation

### INSTALLATION

**\*FOR PRESSURES EXCEEDING 500kPa INSTALL A PRESSURE REDUCING VALVE. THOROUGHLY FLUSH ALL PIPES TO ELIMINATE ANY REMAINING DIRT AND RESIDUE, AND INSTALL INLINE FILTERS. FAILURE TO DO SO MAY VOID THE WARRANTY.**

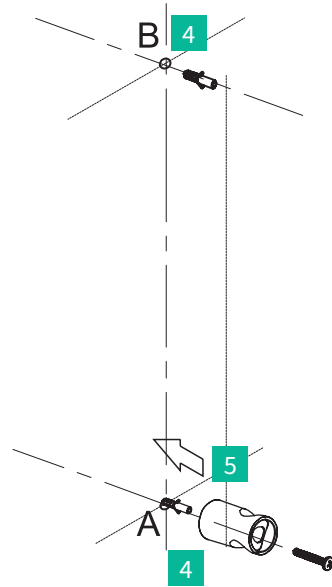
**CAUTION: If using your own screws to install the wall brackets, DO NOT use counter sunk type screws as this will void the warranty.**





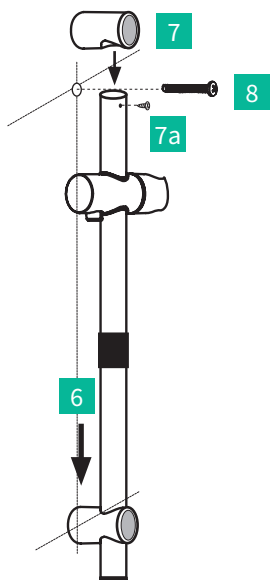
The bottom bracket can be adjusted to desired height

1. Measure and mark anchor positions with pencil.
2. Drill mounting holes suitable for wall anchors.
3. Remove end covers from brackets. Slide bottom bracket off rail, then unscrew retaining screw from top bracket and remove.

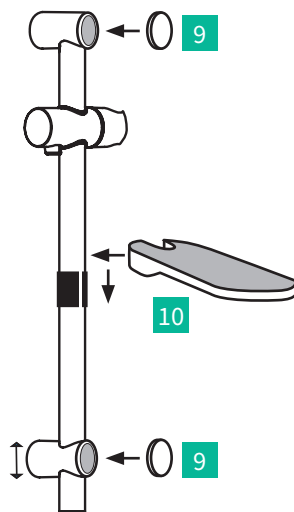


4. Push wall anchors into holes.
5. Fix bottom bracket in place with screw into wall anchor A.

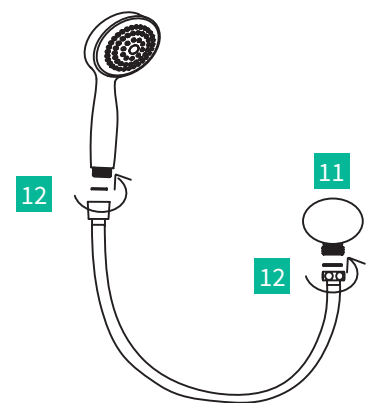
ATTACH PROOF OF PURCHASE HERE



6. Slide the rail tube through the bottom bracket.
7. Slide top bracket onto tube and attach with retaining screw (7a).
8. Fix top bracket in place with screw into wall anchor B.



9. Push end covers onto brackets.
10. Attach soap dish to black plastic fitting on slide rail tube, ensure small tab on soap dish aligns with opening on the fitting.



11. Attach the supply elbow to the supply connection on the wall.
12. Attach hose to elbow and handpiece, then insert handpiece into holder.

## WARRANTY

**PLEASE CALL US BEFORE REMOVING TAPWARE OR UNDERTAKING ANY REPAIR WORK.**

Please refer to our website for warranty information: [www.foreno.co.nz/warranty](http://www.foreno.co.nz/warranty)

In the unlikely event that this product fails during its warranty period, phone our Customer Service team immediately on 0508 FORENO (0508 367 366) – as unauthorised removal of the product may void the warranty.

## CARE AND MAINTENANCE

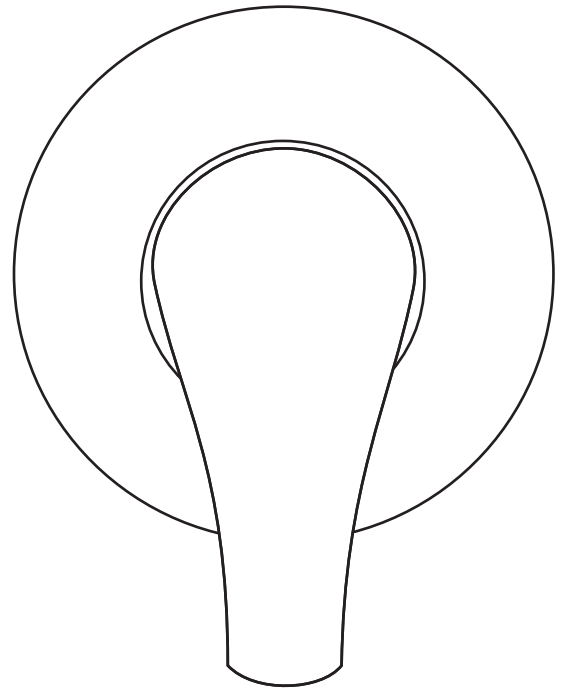
**SHOULD NOT BE CLEANED WITH ASTRINGENT, ABRASIVE OR CITRIC CLEANERS.**

A soft, damp cloth is recommended for cleaning (Not a Micro fibre cloth). Mild soap solutions can also be used on occasion.



# FORENO.

## LE TAP Shower Mixer LT300



9 421009 510948

Congratulations on your purchase of this high quality product from Foreno Tapware.  
Please read the following before installation and retain (along with your receipt) for future reference.

### TECHNICAL SPECIFICATIONS

#### Suitable for All Pressures

Minimum Pressure = 35kPa

Maximum operating Pressure = 500kPa\*

Maximum operating Temperature = 65 deg. Celsius

For domestic use only.

### CONFIGURATION

Mains Pressure systems Prior to installation, remove the valve inserts from both inlets.

Unequal Low systems Install as supplied.

Important note: Only slide showers that are equipped with a large internal bore hose and open flow single function handset will work effectively with this shower mixer. We recommend this mixer be used with a Le Tap Slide Shower (LTSV) for optimum performance. If the cold pressure difference is greater than 10/1 ratio (i.e. 400kPa cold and 35kPa hot), we recommend installing the needle valve (supplied) preferably directly to the cold water feed port on the shower mixer or alternatively anywhere on the cold feedline pipe.

Equal Low systems Prior to installation, remove the valve inserts from both inlets.

### INSTALLATION

**\*FOR PRESSURES EXCEEDING 500KPA INSTALL A PRESSURE REDUCING VALVE. THOROUGHLY FLUSH ALL PIPES TO ELIMINATE ANY REMAINING DIRT AND RESIDUE, AND INSTALL INLINE FILTERS. FAILURE TO DO SO MAY VOID THE WARRANTY.**

Installation must comply with Section 5.4 of AS/NZS 3500 Standard with regard to Isolating stop-cock use. Shower mixers must be water tested with the outlet open, to prevent damage to cartridge seals; due to back pressure.

All pipe work must be flushed prior to the installation of this mixer, accessible inline filters must be installed in the pipework for both the hot and cold inlet supply to prevent particles from damaging the ceramic cartridge.

Back Flow Prevention: Where back flow prevention is required, install our Back Flow Prevention Valve at the supply elbow hose connection of the handpiece.

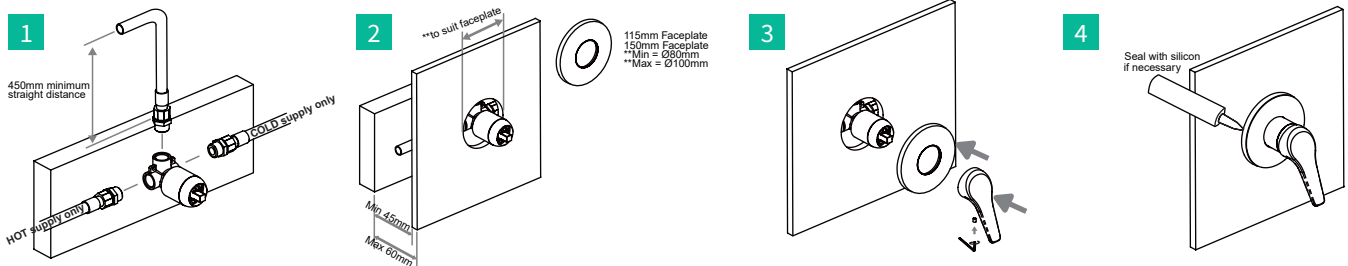
ATTACH PROOF OF PURCHASE HERE

Any water seepage ex- the cartridge cavity opening can be stopped by retightening the large brass retaining nut.

If you have performance issues please check there are no flow restrictors between the hose and the handpiece or the hose and the shower elbow.

Remove any restrictors with rubber washers.

**Plumbers Note: Do not pressure test this mixer under static pressure.**



### TROUBLESHOOTING

1. Is the lever between 7 and 8 O'clock? When installed correctly the lever should be close to 7 O'clock position, at 38°C, delivering about 6L per minute, where the relative hot/cold pressures are not greater than 10:1. We recommend installing the supplied Needle Valve if there is a greater than 10/1 ratio of cold to hot kPa (The needle valve should be about an 1/8th turn open) and/or if the hot and cold mix is temperamental or difficult to adjust.
2. If the lever is beyond 8 O'clock position, it is likely:
  - One of the valve inserts has been removed from the hot/cold ports;
  - The supply elbow has a restrictive bore (i.e. less than 10mm);
  - The supply hose has a bore size less than 9.5mm;
  - The handpiece is not a free-flow single function model
  - The WELs restrictor hasn't been removed.
  - The Pressure reducing valve has not been readjusted (the feed valve on the LP Hot water cylinder should always be readjusted when installing a new mixer, because the head pressure drops over time. To readjust the Feed Valve (Pressure reducing valve) – turn the adjuster screw clockwise until the first drips appear from the relief pipe (protruding from the roof) or relief valve then back it off half-a-turn and re-secure the locking nut.
3. If the hot/cold mix is temperamental where the lever position is within 7-8 O'clock position, either the hot or cold pressures will just require a slight tweak.
4. Check that the hot and cold supply lines have not been incorrectly plumbed in, i.e. such as the cold supply connected to the hot inlet and hot supply connected to the cold inlet. This is especially bad for Unequal Low systems as the hot port on the shower mixer body can enlarge meaning that the valve inserts will also need to be swapped.
5. When using with Unequal Low systems, it needs to be remembered the requirement for a minimum of 450mm of straight outlet pipe, before any bends.

### WARRANTY

**PLEASE CALL US BEFORE REMOVING TAPWARE OR UNDERTAKING ANY REPAIR WORK.**

Please refer to our website for warranty information: [www.foreno.co.nz/warranty](http://www.foreno.co.nz/warranty)

In the unlikely event that this product fails during its warranty period, phone our Customer Service team immediately on 0508 FORENO (0508 367 366) – as unauthorised removal of the product may void the warranty.

### CARE AND MAINTENANCE

**SHOULD NOT BE CLEANED WITH ASTRINGENT, ABRASIVE OR CITRIC CLEANERS.**

A soft, damp cloth is recommended for cleaning. Mild soap solutions can also be used on occasion.

PROUD PARTNER AND SUPPORTER OF MASTER PLUMBERS, GASFITTERS AND DRAINLAYERS

