



# FORENO.

## SYMPHONY Slide Shower Chrome **SYM04**



9 421027 595989

Congratulations on your purchase of this high quality product from Foreno Tapware.  
Please read the following before installation and retain (along with your receipt) for future reference.

### TECHNICAL SPECIFICATIONS

#### Suitable for All Pressures

Minimum Pressure = 35kPa

Maximum operating Pressure = 500kPa\*

Maximum operating Temperature = 65 deg. Celsius

For domestic use only.

### CONFIGURATION

Mains Pressure systems Install the flow regulator as shown in the diagram below.

Unequal Low Systems Install as supplied.

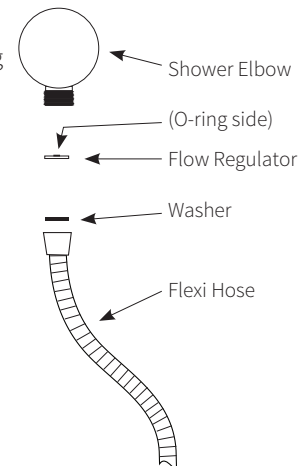
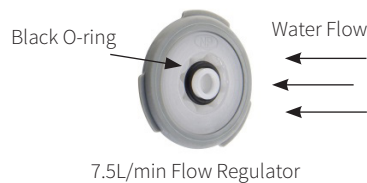
Equal Low systems Install as supplied.

### CONTENTS

- Wall brackets and covers
- Fixing kit (wall anchors & screws)
- Glide bar with adjuster/holder
- 1.5m supply hose
- Supply elbow
- Shower handpiece
- Soap dish
- Flow regulator for Mains Pressure installation

#### Mains Pressure installation:

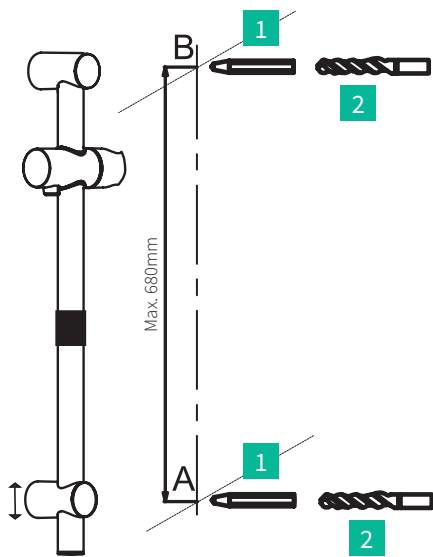
Insert the flow regulator with the O ring facing away from the hose (as shown).  
This will comply with the WELS rating.



### INSTALLATION

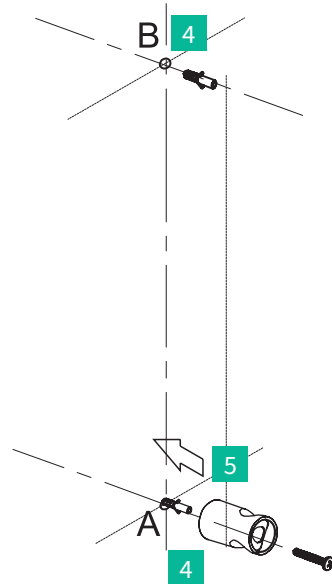
**\*FOR PRESSURES EXCEEDING 500kPa INSTALL A PRESSURE REDUCING VALVE. THOROUGHLY FLUSH ALL PIPES TO ELIMINATE ANY REMAINING DIRT AND RESIDUE, AND INSTALL INLINE FILTERS. FAILURE TO DO SO MAY VOID THE WARRANTY.**

**CAUTION: If using your own screws to install the wall brackets, DO NOT use counter sunk type screws as this will void the warranty.**



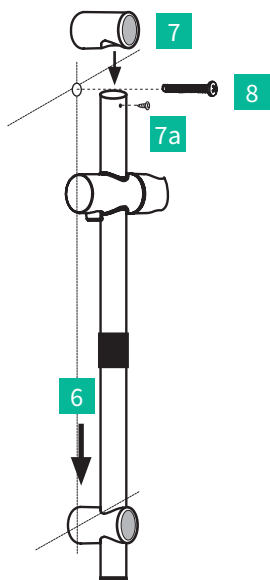
The bottom bracket can be adjusted to desired height

1. Measure and mark anchor positions with pencil.
2. Drill mounting holes suitable for wall anchors.
3. Remove end covers from brackets. Slide bottom bracket off rail, then unscrew retaining screw from top bracket and remove.

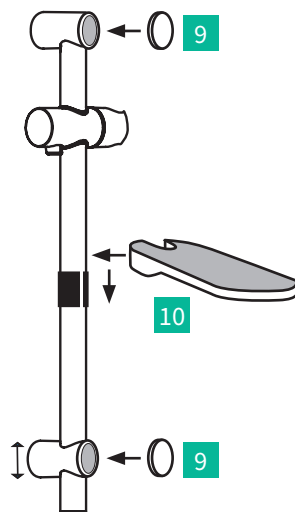


4. Push wall anchors into holes.
5. Fix bottom bracket in place with screw into wall anchor A.

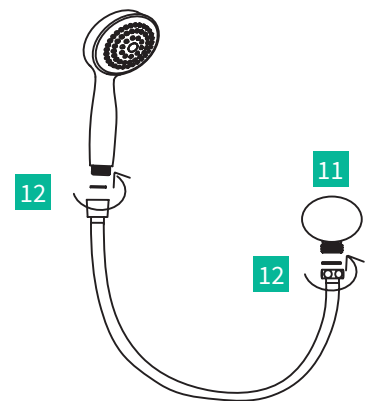
ATTACH PROOF OF PURCHASE HERE



6. Slide the rail tube through the bottom bracket.
7. Slide top bracket onto tube and attach with retaining screw (7a).
8. Fix top bracket in place with screw into wall anchor B.



9. Push end covers onto brackets.
10. Attach soap dish to black plastic fitting on side rail tube, ensure small tab on soap dish aligns with opening on the fitting.



11. Attach the supply elbow to the supply connection on the wall.
12. Attach hose to elbow and handpiece, then insert handpiece into holder.

## WARRANTY

**PLEASE CALL US BEFORE REMOVING OR UNDERTAKING ANY REPAIR WORK.**

Please refer to our website for warranty information: [www.foreno.co.nz/warranty](http://www.foreno.co.nz/warranty)

In the unlikely event that this product fails during its warranty period, phone our Customer Service team immediately on 0508 FORENO (0508 367 366) – as unauthorised removal of the product may void the warranty.

## CARE AND MAINTENANCE

**SHOULD NOT BE CLEANED WITH ACIDIC, CAUSTIC/ALKALINE, ABRASIVE OR CITRIC CLEANERS.**

A soft, damp cloth is recommended for cleaning (Not a Micro fibre cloth). Mild soap solutions can also be used on occasion.